

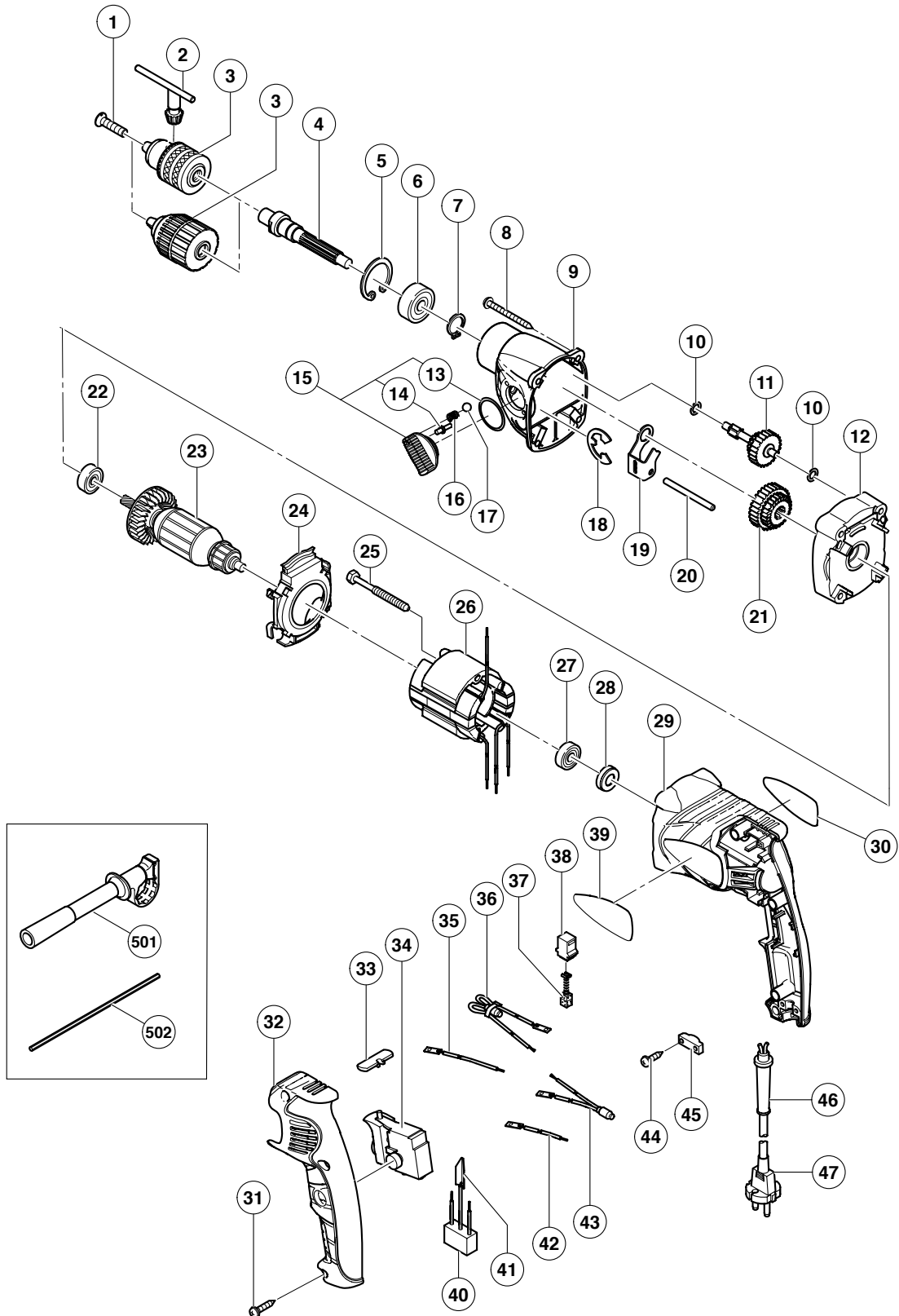
## ELECTRIC TOOL PARTS LIST

■ DRILL

2004 · 11 · 15

Model D 13VH

(E1)



**PARTS**

D 13VH

ITEM NO.	CODE NO.	DESCRIPTION	NO. USED	REMARKS
1	995-344	FLAT HD. SCREW (A) (LEFT HAND) M6X25	1	
2	987-576	CHUCK WRENCH FOR 13VLB-D,13VLR-D	1	
* 3		DRILL CHUCK 13VLRB-D	1	INCLUD. 2 SUPPLIED WITH ITEM NO. 601
* 3	322-625	DRILL CHUCK 13VLRJ-N (W/O CHUCK WRENCH)	1	
4	323-956	SPINDLE (E)	1	
5	939-556	RETAINING RING FOR D35 HOLE (10 PCS.)	1	
6	620-2DD	BALL BEARING 620DDCMPS2L	1	
7	939-544	RETAINING RING FOR D15 SHAFT (10 PCS.)	1	
8	316-321	TAPPING SCREW (W/FLANGE) D5X45	4	
9	323-959	GEAR COVER (A)	1	
10	322-852	WASHER (B)	2	
11	322-858	SECOND PINION AND GEAR SET	1	
12	323-958	INNER COVER (B)	1	
13	306-353	O-RING (S-22)	1	
14	322-848	SHIFT PIN	1	
15	322-847	SHIFT LEVER ASS'Y	1	INCLUD. 13, 14
16	981-328	SPRING (H)	1	
17	319-535	STEEL BALL D3.5 (10 PCS.)	1	
18	323-048	RETAINING RING (E-TYPE) FOR D15 SHAFT	1	
19	322-849	SHIFT ARM	1	
20	322-860	PIN D5	1	
21	322-846	GEAR SET	1	
22	608-DDM	BALL BEARING 608DDC2PS2L	1	
* 23	360-655E	ARMATURE 220V-230V	1	
* 23	360-655F	ARMATURE 240V	1	
24	322-843	FAN GUIDE	1	
25	981-824	HEX. HD. TAPPING SCREW D4X45	2	
* 26	340-589E	STATOR 220V-230V	1	
* 26	340-589F	STATOR 240V	1	
27	698-T1X	BALL BEARING 698T1XZZ1MC2E NS7L	1	
28	309-929	RUBBER BUSHING	1	
29	322-861	HOUSING	1	
30		NAME PLATE	1	
31	301-653	TAPPING SCREW (W/FLANGE) D4X20 (BLACK)	3	
32	322-862	HANDLE COVER	1	
33	322-853	PUSHING BUTTON	1	
34	322-820	SWITCH (A)	1	
* 35	321-630	INTERNAL WIRE (BROWN) 100L	1	FOR KUW, INA, SAU, SIN
* 36	322-517	CHOKE COIL (BROWN) 220V-240V	1	EXCEPT FOR KUW, INA, SAU, SIN
37	999-041	CARBON BRUSH (1 PAIR)	2	
38	955-203	BRUSH HOLDER	2	
39		HITACHI LABEL	1	
* 40	994-273	NOISE SUPPRESSOR	1	FOR FRA, AUS, SAF, CHN
* 41	992-635	EARTH TERMINAL	1	FOR FRA, AUS, SAF, CHN
* 42	321-631	INTERNAL WIRE (BLUE) 55L	1	FOR KUW, INA, SAU, SIN
* 43	321-634	CHOKE COIL (BLUE) 110V-240V	1	EXCEPT FOR KUW, INA, SAU, SIN
44	984-750	TAPPING SCREW (W/FLANGE) D4X16	2	
45	937-631	CORD CLIP	1	
46	953-327	CORD ARMOR D8.8	1	
* 47	500-409Z	CORD	1	(CORD ARMOR D8.8)
* 47	500-439Z	CORD	1	(CORD ARMOR D8.8) FOR AUS



